



AREAS OF FOCUS

- Economic Development
- Education
- Health & Wellness
- Criminal Justice
- Human Rights

CONTACT INFO

Alex Tovar
Program Coordinator
803-832-8298
atovar@cma.sc.gov

Dr. Robert P. Fenton
Director of Research
803-832-8301
rfenton@cma.sc.gov

Ja'Curas McCloud
Statistical and Research Analyst
803-832-8252
jmccloud@cma.sc.gov

STAY CONNECTED WITH US

 @sccfma

 @sccfma

 @southcarolinaminorityaffairs

 cma.sc.gov

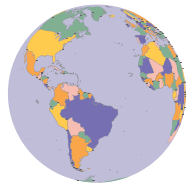
S.C. COMMISSION FOR MINORITY AFFAIRS

Hispanic/Latino Affairs Division

ABOUT THE DIVISION

The Hispanic/Latino Affairs Division of the South Carolina Commission for Minority Affairs examines and addresses the causes and challenges faced by the state's Hispanic/Latino community. The division will address several issues including economics, education, health, criminal justice and human rights. The division is vital in helping the Commission achieve its mission of providing constructive solutions and approaches to support the policy and socio-economic development of ethnic minority communities.

DID YOU KNOW?



NATIONALITIES

TOP 5

The five most common nationalities among the Hispanic community of SC are Mexican (50%), Puerto Rican, Honduran, Colombian and Guatemalan.



SMALL BUSINESS OWNERSHIP

34,971

There are over almost 35,000 business firms in South Carolina owned by the Hispanic. There are 33,000 non-employer firms and 1,971 employer firms.



POPULATION

329,424

There are almost 330,000 South Carolinians that identify as Hispanic/Latino. This is the third largest ethnic group in South Carolina.



INCOME

\$5.67B

In South Carolina, the Hispanics had a total of \$5.67 billion in aggregate household income. The median income for Hispanic households in South Carolina was \$49,521.



HEALTH

28.2%

Twenty-eight percent of Hispanic or Latino citizens of South Carolina don't have any health insurance coverage. In total, 90,329 are uninsured.



EDUCATION

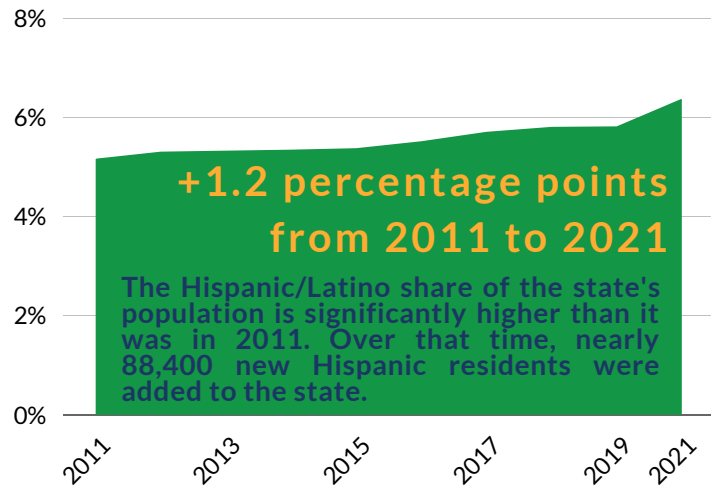
20.8%

The Hispanic/Latino community had just under 21% of adults over the age of 25 with at least a Bachelor's degree. On the other hand, 31.43% had less than a high school diploma or equivalent.

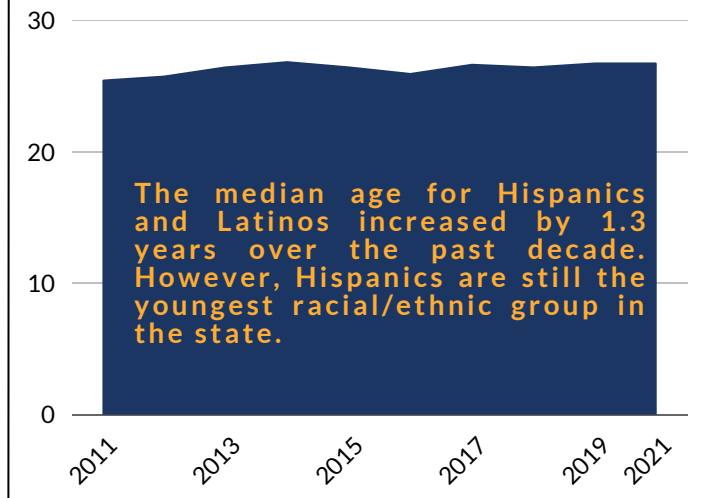


SUMMARY DATA ON SOUTH CAROLINA'S Hispanic/Latino Population from 2011 to 2021

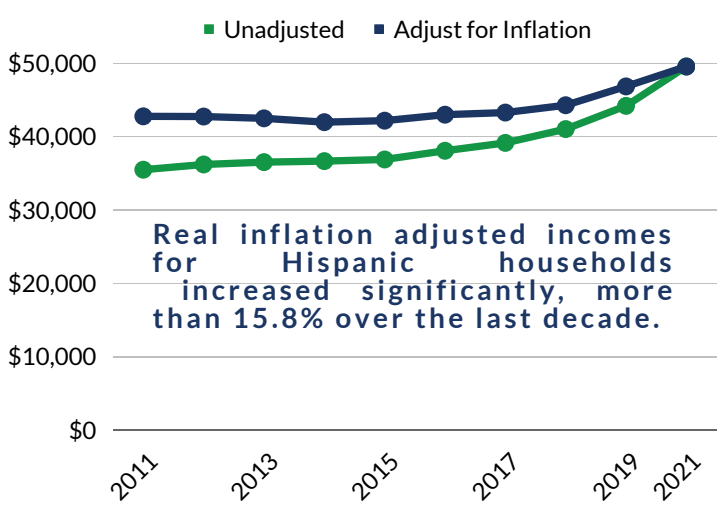
Population Share



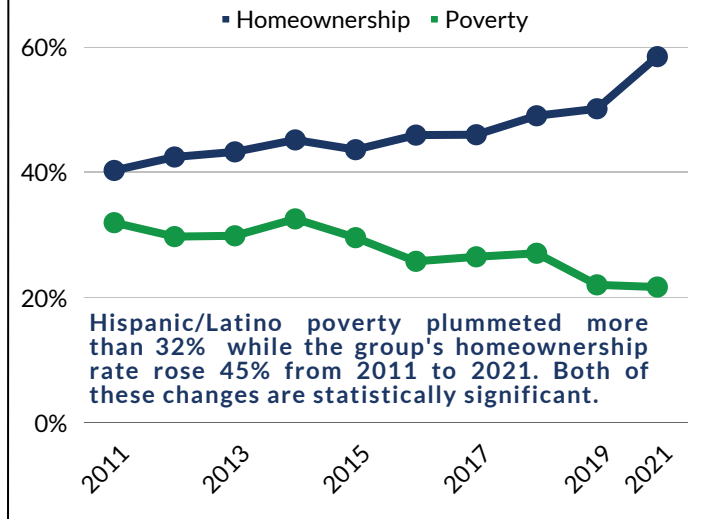
Median Age



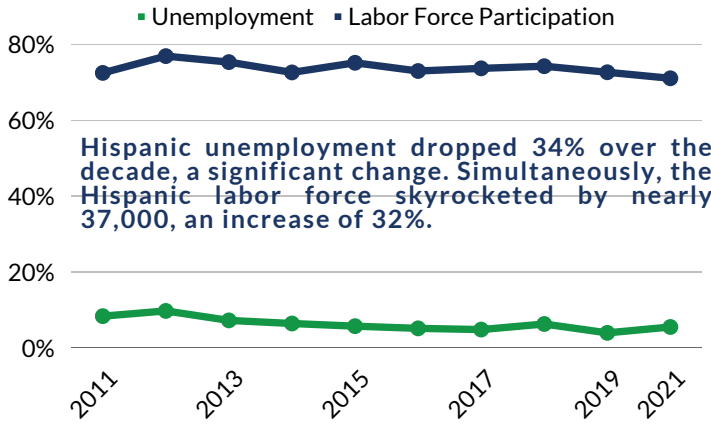
Median Household Income



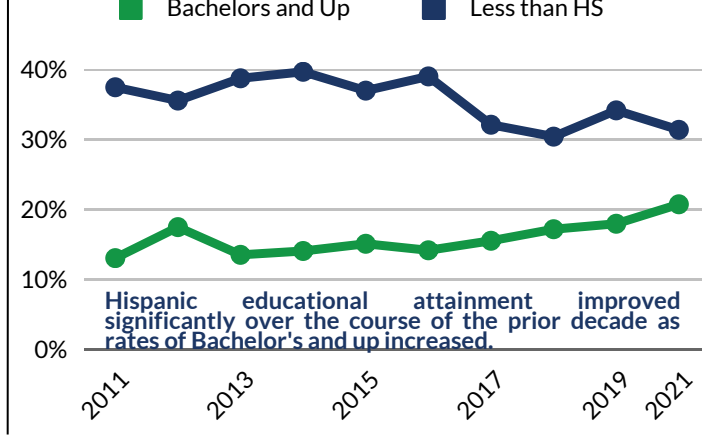
Rates for Homeownership and Poverty



Unemployment and Labor Force Participation (Age 18-64)



Educational Attainment (Age 25+)



Source: All data is from One-Year American Community Survey Summary Files for 2011 to 2021. Data for 2020 missing due to issues with data integrity during COVID-19 Pandemic.